

The Conover Company – Creating a Custom Data Location

This document will explain how to install The MECA System, The Success Profiler, Personal Responsibility or The Functional Skills System so the content is access from a local hard drive while the shared data is accessed from a network drive. This is useful when you either do not have enough space on your network to do a full install, or you are worried about using too much network bandwidth to access our programs.

We will be using The MECA System in this example, but the same information applies to all of our networkable programs.

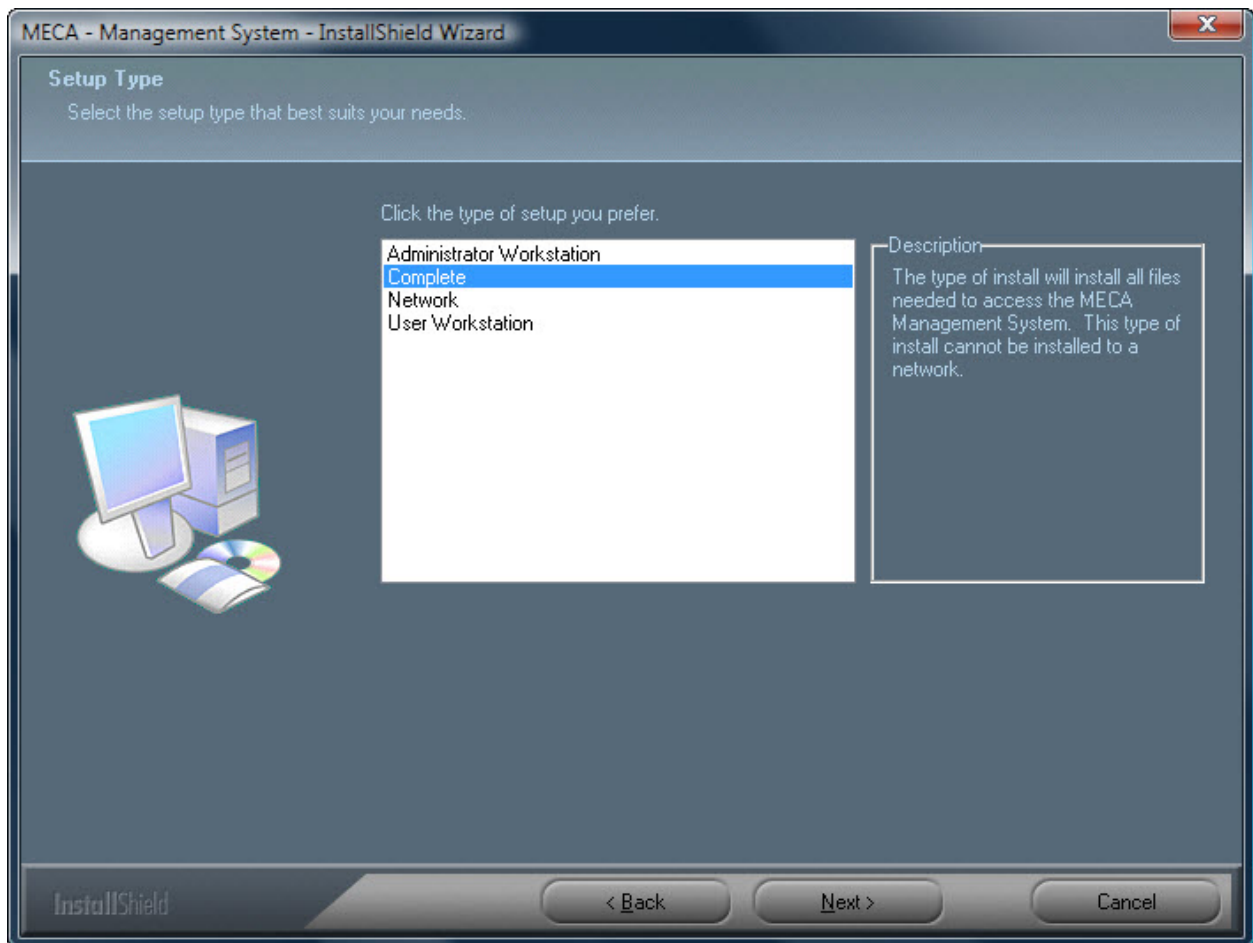
If you purchased a MECA System or Functional Skills System that was shipped on multiple CD-ROMs, please contact The Conover Company for an upgrade. We will send you updated software on DVD that will make installation much smoother. Without the updated software on DVD, you will be forced to install all of the CD-ROMs on every computer that you want to have access to the software. With the DVD, each individual CD-ROM is already preloaded on the DVD.

Step 1. Install the software on your computer

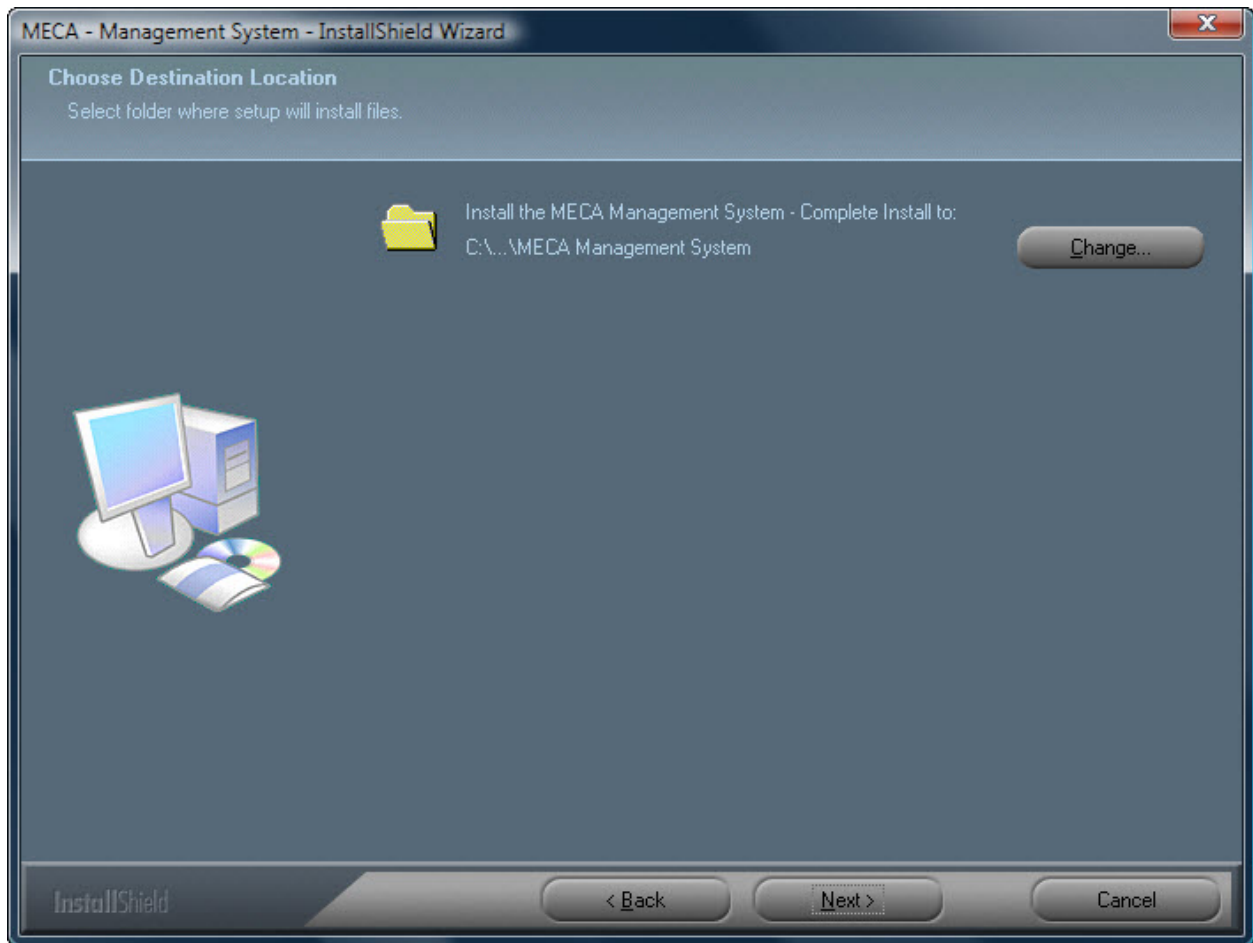
Note: This step will need to be done on every computer that you want to have access the software.

Insert the software DVD/CD and launch the installation program. Navigate through the welcome screen and license agreement.

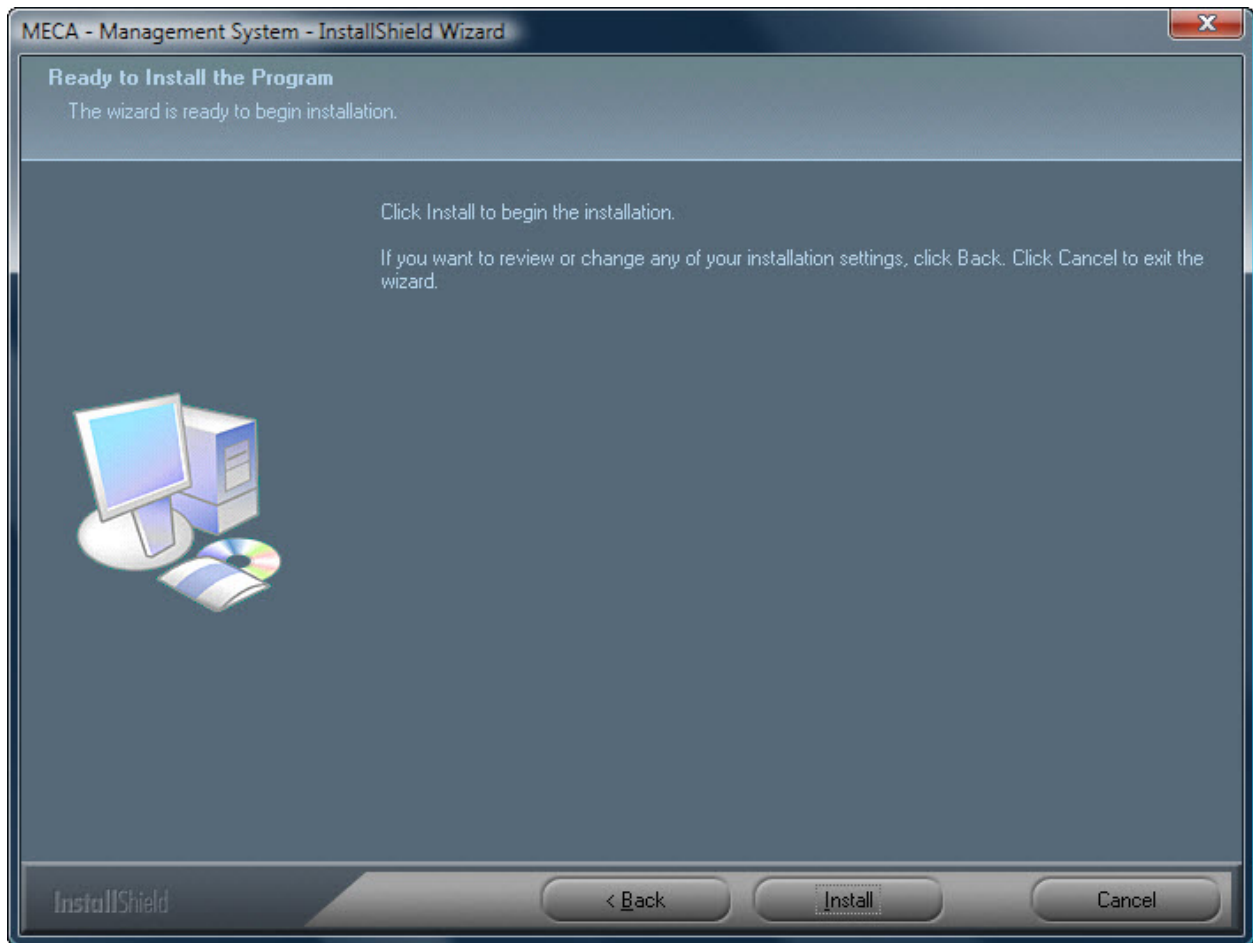
When you get to the screen where you need to choose a setup type, choose **Complete** and click Next.



Use the default Destination. Click Next.



Click the Install button to begin the installation.



2. Copy the DATA files from your local computer to your Network.

Once the software has been installed, you will need to copy the data files from your local hard drive to your network drive. Here is a listing of the folders you will need to copy for each program.

The MECA System

DATA
Loggedin
Unitlist

Personal Responsibility

DATA
Loggedin

Success Profiler

DATA
Loggedin

Functional Skills System

DATA
Loggedin
Unitlist
Words

When you copy the files to your network, please make sure to keep each program's data files in separate folders, just like you see in the listing above.

This step only needs to be done once. Once you have the data on the network, you will not need to copy the data folders again.

3. Change the program's Data Location.

Note: This step will need to be done on every computer that you want to have access the software.

Once the software is installed and the data has been moved to a network drive, you will need to tell the program to look in a new location for the data. This can be accomplished by using the Administration Program or manually modifying a text file.

A. Using the Administration Program

Launch the Administration Program. Login using the password. Select Configuration Options. Select Modify File Locations. Click the "Select Data Location" button. Using the dialog, choose the location on the network where you copied the data folders. Do not choose the actual data folder, choose the folder that contains the data folder. The data location is now changed

B. Manually edit the Datapath.txt file

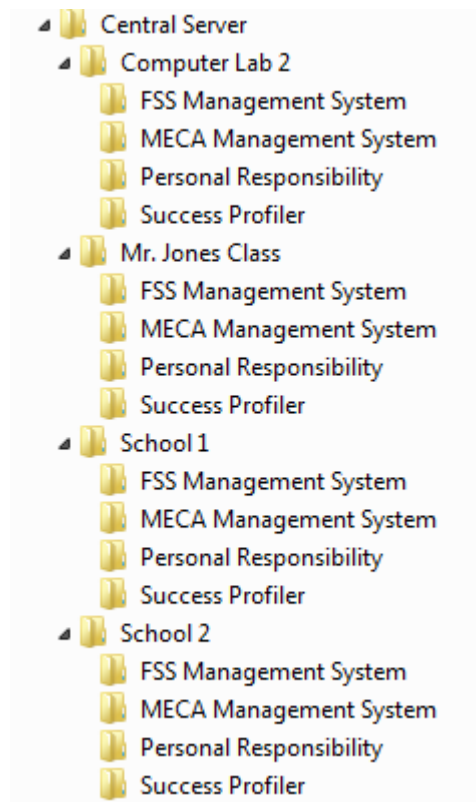
The path to the data files is stored in a file called datapath.txt. This file is located in the location where you installed the software on the local hard drive. Open the datapath.txt file and type in the new path. Save the file when done. If you type an incorrect path, the program will run a check each time it is launched and you will be able to use a dialog box to choose the correct data location.

Steps 1 and 3 will need to be done on each computer, for each program that you want to customize the data location.

Storing multiple data files on a centralized server

It is possible to store multiple sets of data on a central server. This is useful when you want to use your Wide Area Network or a central server to host your data for more than one school/computer lab. The process is very similar to using a custom data location, except that there will be multiple sets of data on the server. Follow the instructions on the previous pages to setup your individual workstations. The only difference is the layout of the files on the central server.

Here is an example of how the data can be setup on your central server. Notice that the layout is very similar to the layout explained in **Step 2. Copy the DATA file from your local computer to your Network**, except that there are multiple sets of data. When changing the data location on the individual local computers, you would need to select which set of data you will be using. In this example, the data for School 1 is stored in a School 1 folder. You can give the folders any name you would like.



If you need any assistance, please contact The Conover Company at support@conovercompany.com or at 800-933-1933